

**RESTRICTED USE PESTICIDE**  
 FOR RETAIL SALE TO AND USE BY CERTIFIED APPLICATORS AND PERSONS UNDER THEIR DIRECT SUPERVISION, AND ONLY FOR THOSE USES COVERED BY THE CERTIFIED APPLICATORS CERTIFICATION.

# DURSBAN\* 4-E INSECTICIDE

IN COMMERCIAL ORNAMENTAL NURSERIES, GOLF COURSES (TURF), SOD FARMS, ROAD MEDIANS AND INDUSTRIAL PLANT SITES. CONTROLS MANY LISTED INSECTS.

**Active Ingredients:**

Chlorpyrifos: [ O,O-diethyl O-(3,5,6-trichloro-2-pyridyl) phosphorothioate] .....	44.90%
Inert Ingredients* .....	55.10%

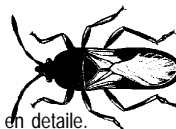
Contains 4 pounds of Chlorpyrifos per gallon

\* Contains Xylene & Xylene range aromatic solvent

\*Dursban and the Dursban logo are registered Trademarks of DowAgroSciences



**Keep Out Of Reach Of Children  
 WARNING - AVISO**



Si Usted no entiende la etiqueta, busque a alguien para que se la explique a Usted en detalle.

(If you do not understand this label, find someone to explain it to you in detail.)

SEE INSIDE OF LABEL FOR ADDITIONAL PRECAUTIONARY STATEMENTS, STATEMENTS OF FIRST AID, AND USE DIRECTIONS.

## Southern Agricultural Insecticides, Inc.

Palmetto, FL 34220      Hendersonville, NC 28793      Boone, NC 28607

E.P.A. Reg. No. 829-280      J1      E.P.A. Est. No. 829-FL-1

**Net Contents Liquid: 2.5 Gallon (9.746 liters)**

## Precautionary Statements

### Hazards to Humans and Domestic Animals

**WARNING:** May be fatal if swallowed or absorbed through skin. Causes skin irritation and eye irritation. Do not get in eyes, on skin, or on clothing. Harmful if inhaled. Avoid breathing vapors or spray mist. Do not spray vegetable gardens or other plants used for food purposes.

### FIRST AID

#### Organophosphate

**IF SWALLOWED:** Call poison control center or doctor immediately for treatment advice. Contains petroleum distillate. Do not induce vomiting. Do not give anything by mouth to an unconscious person.

**IF ON SKIN OR CLOTHING:** Take off contaminated clothing. Rinse skin with plenty of water for 15-20 minutes. Call a poison control center or doctor for treatment advice.

**IF IN EYES:** Hold eye open and rinse slowly and gently with water for 15-20 minutes. Remove contact lenses, if present, after the first 5 minutes, then continue rinsing eye. Call a poison control center or doctor for treatment advice.

**IF INHALED:** Move person to fresh air. If person is not breathing, call 911 or an ambulance, then give artificial respiration, preferably by mouth-to-mouth, if possible. Call a poison control center or doctor for treatment advice.

**NOTE TO PHYSICIAN:** Contains petroleum distillate - vomiting may cause aspiration pneumonia. Contains an organophosphate that inhibits cholinesterase. Treat symptomatically. Atropine only by injection is an antidote.

Have the product container or label with you when calling a poison control center or doctor, or going for treatment. For information on this product (including health concerns, medical emergencies, or pesticide incidents) call the National Pesticide Information Center at 1-800-858-7378.

## PERSONAL PROTECTIVE EQUIPMENT

Some materials that are chemical-resistant to this product are listed below. If you want more options, follow the instructions for category G on an EPA chemical resistance category selection chart.

**WPS USES:** Applicators and other handlers who handle this pesticide for any use covered by the Worker Protection Standard (40 CFR Part 170) - in general, only agricultural-plant uses are covered - must wear:

1. Coveralls over short-sleeved shirt and short pants.
2. Chemical-resistant gloves, such as barrier laminate or viton.
3. Chemical-resistant footwear plus socks.
4. Protective eyewear: goggles, face shield, or safety glasses with front, brow, and temple protection.

**NON-WPS USES:** Applicators and other handlers who handle this pesticide for any use NOT covered by the Worker Protection Standard (40 CFR Part 170) - in general, only agricultural-plant uses are covered - must wear:

1. Long-sleeved shirt and long pants
2. Chemical-resistant gloves, such as barrier laminate or viton.
3. Shoes plus socks.
4. Protective eyewear: goggles, face shield, or safety glasses with front, brow, and temple protection.

Discard clothing and other absorbent materials that have been drenched or heavily contaminated with this product's concentrate. Do not reuse them. Follow manufacturer's instructions for cleaning and maintaining PPE. If no such instructions for washables, use detergent and hot water. Keep and wash PPE separately from other laundry.

(continued on next page)

## USER SAFETY RECOMMENDATIONS

User should: 1. Wash hands before eating, drinking, chewing gum, using tobacco, or using the toilet.  
2. Remove clothing immediately if pesticide gets inside. Then wash thoroughly and put on clean clothing.

## ENVIRONMENTAL HAZARDS

This product is toxic to birds, fish, and aquatic invertebrates. Birds feeding in treated areas may be killed. Clean up spilled product to reduce exposure to wildlife. For terrestrial uses, do not apply directly to water, or to areas where surface water is present or to intertidal areas below the mean high water mark. Runoff may be hazardous to aquatic organisms in neighboring areas. Do not contaminate water when disposing of equipment washwaters.

## PHYSICAL OR CHEMICAL HAZARDS

Keep container closed. KEEP AWAY FROM OPEN FLAME. Handle concentrate in a ventilated area.

## STORAGE AND DISPOSAL

Do not contaminate water, food or feed by storage or disposal.

**Storage:** Store in original container in secured dry storage area. Prevent cross contamination with other pesticides and fertilizers. Do not store above 100° F for extended periods of time. If container is damaged or spill occurs, use product immediately or dispose of product and damaged container as indicated below.

**Pesticide Disposal:** Pesticide wastes are toxic. Improper disposal of excess pesticide, spray mixture, or rinsate is a violation of Federal Law. If these wastes cannot be disposed of by use according to label instructions, contact your State Pesticide or Environmental Control Agency, or the Hazardous Waste representative at the nearest EPA Regional Office for guidance.

**Container Disposal:** PLASTIC Triple rinse (or equivalent). Then puncture and dispose of in a sanitary landfill, or incineration, or if allowed by state and local authorities, by burning. If burned, stay out of smoke.

## DIRECTIONS FOR USE

It is a violation of Federal law to use this product in a manner inconsistent with its labeling.

Do not apply this product through any type of irrigation system.

Do not allow spray to drift from the application site and contact people, structures people occupy at any time and the associated property, parks and recreation areas, nontarget crops, aquatic and wetland areas, woodlands, pastures, rangelands, or animals. Apply only when wind speed is not more than 10 mph. For sprays, apply largest size droplets possible.

For any requirements specific to your State or Tribe, consult the agency responsible for pesticide regulation.

### AGRICULTURAL USE REQUIREMENTS

Use this product only in accordance with its labeling and with the Worker Protection Standard, 40 CFR Part 170. This standard contains requirements for the protection of agricultural workers on farms, forests, nurseries, and greenhouses, and handlers of agricultural pesticides. It contains requirements for training, decontamination, notification, and emergency assistance. It also contains specific instructions and exceptions pertaining to the statements on this label about personal protective equipment and restricted-entry intervals. The requirements in this box only apply to uses of this product that are covered by the Worker Protection Standard.

Do not enter or allow worker entry into treated areas during the restricted-entry interval (REI) of 24 hours.

PPE required for early entry to treated areas that is permitted under the Worker Protection Standard and that involves contact with anything that has been treated such as plants, soil, or water, is:

1. Coveralls over short-sleeved shirt and short pants
2. Chemical-resistant gloves, such as barrier laminate or viton
3. Chemical-resistant footwear plus socks
4. Protective eyewear: goggles, face shield, or safety glasses with front, brow, and temple protection.

### NON-AGRICULTURAL USE REQUIREMENTS

The requirements in this box apply to uses of this product that are NOT within the scope of the Worker Protection Standard for agricultural pesticides (40 CFR Part 170). The WPS applies when this product is used to produce agricultural plants on farms, forests, nurseries, or greenhouses.

Keep the public (including children and pets) of the treated area until sprays have dried.

## USE DIRECTIONS - PESTS OUTDOORS

### PEST OF TURF ON SOD FARMS, GOLF COURSES (turf), ROAD MEDIANS, AND INDUSTRIAL PLANT SITES. ( Not for residential use.)

Use DURSBAN 4-E to control the pests listed below by application at the recommended dosages and in accordance with the directions given below. Dilute DURSBAN 4-E in enough water to obtain complete and uniform coverage of pest infested areas and apply as a coarse, low-pressure spray using suitable application equipment. Thoroughly water immediately after treatment to wash the insecticide into the turf, except as noted. For best results, the turf should be moist at time of treatment.

**INSECTS CONTROLLED - Ants, Armyworms, Brown dog tick, Chiggers, Chinch bugs, Clover mite, Crickets, Cutworms, Earwigs, Fleas, Grasshoppers, Sod Webworms.** Use 3/4 fl. oz. per 1,000 sq. ft (1 Qt per acre). Spray when pests first appear: re-treat when needed. For sod webworms delay watering or mowing the treated area for 12 to 24 hours after treatment. Use 3-6 gals. water per 1,000 sq. ft.

**Area Control of Ticks and Chiggers:** Use DURSBAN 4-E to control ticks and chiggers infesting non-cropland areas where these pests are present and create a nuisance or possible public health problem. Apply DURSBAN 4-E in water at the rate of 1/2 pint per acre (equivalent to 1/2 fl. oz. per 2,700 sq. ft.) using hydraulic sprayer, mist applicator, knapsack sprayer, or other suitable hand or power spray equipment. Treat low underbrush, grassy areas, weeds and ground surface and debris using enough spray volume to obtain thorough coverage usually 40 to 100 gallons per acre. **ATTENTION:** Do not allow public use of treated areas during application or until spray has dried.

## **TO HELP PREVENT INFESTATIONS OF BUILDINGS (Industrial plant sites only)**

For Ants, Crickets, Earwigs, and Sowbugs (pillbugs), treat a band of soil 6 to 10 feet wide around and adjacent to the building, also the building foundation to a height of 2 to 3 feet, where pests are active and may find entrance. Use the same dosage and dilution recommended for control of these pests on turf as shown under **PESTS OF TURF** Apply as a coarse spray to thoroughly and uniformly wet the band area.

### **ORNAMENTALS IN COMMERCIAL NURSERIES AND AROUND INDUSTRIAL PLANT SITES:**

Use DURSBAN 4-E Insecticide to control aphids, bagworms, cutworms, grasshoppers, leafhoppers, mealybugs, mites, spittlebugs, thrips (exposed), and whiteflies on flowers, shrubs, vines, shade and flowering trees and evergreens found to be infested with these pests. Dilute DURSBAN 4-E Insecticide with water according to following directions and apply using a suitable hand or power spray equipment in a manner to provide complete and uniform coverage of infested plants. Avoid overspraying to the point of excessive runoff. Treat when pests appear and repeat at 7 to 10 day intervals, if needed. **NOTE:** Do not use on azaleas, camellias, poinsettias, rose bushes or variegated ivy because of possible injury to these plants.

PESTS CONTROLLED	RATE PER		
	3 GALLONS	10 GALLONS	100 GALLONS
Aphids, Bagworms, Eastern Tent caterpillar, Fall webworm, Grasshoppers, Mites, Orangestriped oakworm, Spittlebugs, White Flies, Yellow necked Caterpillar.	0.5 fl. oz	0.8 fl. oz	1/2 pint
Cutworms, Leafhoppers Mealybugs, Mimose webworms, Redhumped caterpillar, Thrips (exposed)	0.5 fl. oz	1.6 fl. oz	1 pint
Ash borer, Lilac borer, Scale crawlers, (Oak lecanium, Pine needle, Tea, White peach)	1.0 fl. oz	3.2 fl. oz	1 quart

**NOTICE:** Seller warrants that the product conforms to its chemical description and is reasonably fit for the purposes stated on the label when used in accordance with directions under normal conditions of use, but neither this warranty nor any other warranty of MERCHANTABILITY OR FITNESS FOR A PARTICULAR PURPOSE, express or implied, extends to the use of this product contrary to label instructions, or under abnormal conditions, or under conditions not reasonably foreseeable to seller, and buyer assumes the risk of any such use.