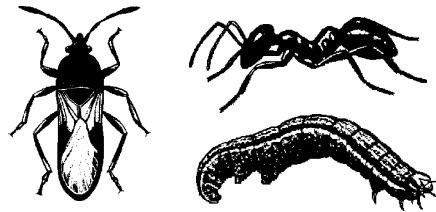




DURSBAN* 2.5% GRANULAR INSECTICIDE

For professional use only. Not for sale to homeowners.
For Control of Various Insects (and Other Arthropods) Infesting Sod Farms, Golf Course Turf, Outdoor Areas around Industrial Plant Sites, and Ornamental Nurseries for Commercial Production Only.

Active Ingredient:
Chlorpyrifos: O,O-diethyl-0-(3,5,6-trichloro-2-pyridinyl) phosphorothioate 2.5%
Inert Ingredients 97.5%
Total 100.0%
*Trademark of DowAgrosciences.



Keep Out of Reach of Children CAUTION

FIRST AID ORGANOPHOSPHATE

IF SWALLOWED: Call a physician or Poison Control Center. Drink 1 or 2 glasses of water and induce vomiting by touching back of throat with finger, or if available by administering syrup of ipecac. If person is unconscious, do not give anything by mouth and do not induce vomiting.
IF IN EYES: Flush eyes with plenty of water. Call a physician if irritation persists. **IF ON SKIN:** Wash with plenty of soap and water. Get medical attention if irritation persists.
IF INHALED: Remove victim to fresh air. If not breathing, give artificial respiration, preferably mouth-to-mouth. Get medical attention.

STORAGE AND DISPOSAL

Do not contaminate water, food, or feed by storage or disposal
PESTICIDE STORAGE: Store this pesticide in original container in a locked storage area.
PESTICIDE DISPOSAL: Wastes resulting from the use of this product may be disposed of at approved waste disposal facility.
CONTAINER DISPOSAL: Completely empty bag into application equipment. Then dispose of bag in a sanitary landfill or by incineration.

Warranty Disclaimer

Southern Ag and Seller warrants that this product conforms to the chemical description on the label and is reasonably fit for the purposes stated on the label when used in strict accordance with the directions, subject to the inherent risks set forth below. SOUTHERN AG AND SELLER MAKES NO OTHER EXPRESS OR IMPLIED WARRANTY OF MERCHANTABILITY OR FITNESS FOR A PARTICULAR PURPOSE OR ANY OTHER EXPRESS OR IMPLIED WARRANTY.

EPA EST. NO. 829-FL-1 (3); 829-NC-1 (4); 829-NC-2 (5)
umber following Est. No. corresponds to first digit in Lot No.

Southern Agricultural Insecticides, Inc.

Palmetto, Fla. 34220 Hendersonville, N.C. 28793 Boone, N.C. 28607
E.P.A. Reg. No. 829-292 J2

Net Weight: 50 lbs.(22.68 kg)

PRECAUTIONARY STATEMENTS

HAZARDS TO HUMANS AND DOMESTIC ANIMALS

CAUTION: Harmful if swallowed or absorbed through skin or inhaled. Causes moderate eye irritation. Avoid contact with eyes, skin, or clothing. Avoid breathing dust.

PERSONAL PROTECTIVE EQUIPMENT (PPE)

Applicators and other handlers must wear long-sleeved shirt and long pants, shoes plus socks, and waterproof gloves. Follow manufacturer's instructions for cleaning/maintaining PPE. If no such instructions for washables, use detergent and hot water. Keep and wash PPE separately from other laundry.

USER SAFETY RECOMMENDATIONS

Users should: wash hands before eating, drinking, chewing gum, using tobacco or using the toilet. Remove clothing immediately if pesticide gets inside. Then wash thoroughly and put on clean clothing.

ENVIRONMENTAL HAZARDS

This product is toxic to fish, birds, and aquatic invertebrates. Birds feeding in treated areas may be killed. Clean up spilled product to reduce exposure to wildlife. Do not apply directly to water, or to areas where surface water is present, or to intertidal areas below the mean high water mark. Do not contaminate water when disposing of equipment washwaters.

Inherent Risks of Use

It is impossible to eliminate all risks associated with use of this product. Plant injury, lack of performance, or other unintended consequences may result because of such factors as use of the product contrary to label instructions (including conditions noted on the label, such as unfavorable temperature, soil conditions, etc.), abnormal conditions (such as excessive rainfall, drought, tornadoes, hurricanes), presence of other materials, the manner of application, or other factors, all of which are beyond the control of Southern Ag and Seller. All such risks shall be assumed by Buyer.

DIRECTIONS FOR USE

It is a violation of Federal Law to use this product in a manner inconsistent with its labeling.

Read all directions for use before applying.

Do not apply this product in a way that will contact workers or other persons, either directly or through drift. Only protected handlers may be in the area during application. For any requirements specific to your State or Tribe, consult the agency responsible for pesticide regulation.

AGRICULTURAL USE REQUIREMENTS

Use this product only in accordance with its labeling and with the Worker Protection Standard, 40 CFR part 170. This Standard contains requirements for the protection of agricultural workers on farms, forests, nurseries, and greenhouses, and handlers of agricultural pesticides. It contains requirements for training, decontamination, notification, and emergency assistance. It also contains specific instructions and exceptions pertaining to the statements on this label about personal protective equipment (PPE), and restricted-entry interval. The requirements in this box only apply to uses of this product that are covered by the Worker Protection Standard.

Do not enter or allow worker entry into treated areas during the restricted entry interval (REI) of 24 hours. Certified crop advisors or persons entering fields under their direct supervision under certain circumstances may be exempt from the early reentry requirement pursuant to 40 CFR Part 170.

PPE required for early entry to treated areas that is permitted under the Worker Protection Standard and that involves contact with anything that has been treated, such as plants, soil, or water, is: coveralls, waterproof gloves, and shoes plus socks.

NON-AGRICULTURAL USE REQUIREMENTS

The requirements in this box apply to uses of this product that are NOT within the scope of the Worker Protection Standard for agricultural pesticides (40 CFR Part 170). The WPS applies when this product is used to produce agricultural plants on farms, forests, nurseries, or greenhouses. Keep the public (especially children and pets) off treated area until subsequent rainfall or irrigation has washed the bait into the soil and the area is dried.

General Information

Dursban® 2.5% granular insecticide is intended for use in Nurseries for Commercial Production Only, Golf Course Turf, Sod Farms, Road Medians and Industrial Plant sites to Control Various listed Insects. Do not use this product indoors. Do not feed grass clippings to livestock.

Insects Controlled Include: Ants, Armyworms, Billbugs, Boxelder bugs, Chiggers, Chinch bugs, Clover mites, Crickets, Cutworms, Earwigs, Fleas, Grasshoppers, Sod webworms (lawn moths), Sowbugs (pillbugs), (1) Fire ants, (2) Ticks (including deer ticks)
indicates that watering in of Dursban 2.5% will increase effectiveness.
(#) Numbers in parentheses refer to specialized application directions.

Dosage Rates

Area To Be Treated	lbs. of Dursban 2.5%
1,000 sq ft	1 pound
5,000 sq ft	5 pounds
10,000 sq ft	10 pounds

Maximum application rate is 1 lb. a.i. per acre

Application Instructions

Applications to Golf Course Turf, Sod Farms, Outside of Industrial Plant Buildings and Fire Ant Mounds

Apply Dursban 2.5% uniformly to turf at the rate of 1 pound per 1,000 sq ft. Consult the table to determine the amount of Dursban 2.5% needed for a larger-sized areas. Use any hand or power-operated gravity or rotary type spreader designed for application of granular materials. To help obtain uniform distribution of Dursban 2.5% on the turf, apply one-half of the required amount of product in one direction; then apply the amount remaining at a right angle.

1. Fire Ant Control-Professional use only for individual fire ant mounds.

Apply Dursban 2.5% at a rate of 1 ounce (2 tablespoons) per active mound. Sprinkle granules gently and evenly over surface of mound and out approximately two feet surrounding the mound. Avoid disturbing ants. For best results, apply when ants are least active: in cool weather, 65°F to 80°F, or in early morning or late evening hours. Treat new mounds as they appear.

Note: Broadcast use on residential turf is not allowed.

2. For control of ticks infesting areas around plant sites and in turf areas, tuck pants legs into socks to avoid tick bites. An insect repellent sprayed onto lower legs and socks should give additional protection from possible bites. Wearing light colored pants and socks will aid in spotting ticks that may attach during treatment.

Treat perimeter of building and turf by applying Dursban 2.5% uniformly at the rate of 1 pound per 1,000 sq. ft. under shrubbery and in and around ground cover. Treat edges or perimeter of turf area where grass and other ground cover plants exist and other areas that appear likely to serve as harborage sites for ticks that have removed themselves from their host. Prior to and following treatment, weeds and high grasses should be kept trimmed to reduce tick harborage sites. Rodents can serve as hosts for ticks. Rock piles, wood piles, and other rodent habitats should be removed or reduced. Key months for deer tick control are April through November in most parts of the country. For specific timing of application in your geographic area, contact your local extension service.

To Prevent Infestation Outside of

Industrial Plant Buildings by Insects:

Such as: ants, crickets, earwigs, fleas, sowbugs (pillbugs), clover mites, ticks, spiders, boxelder bugs

Treat a band of soil 6 to 10 feet around and adjacent to the perimeter of the building where pests are active and may find entrance. Use the same dosage recommended (1 pounds per 1,000 sq. ft.) for control of these pests on turf found in the application chart.

To Control the Following Insects in

Ornamental Nurseries for

Commercial Production

To Control: Ants, Armyworms, Crickets, Cutworms, Sowbugs (pillbugs), Grasshoppers, Earwigs, Ticks. Apply Dursban 2.5% evenly over soil within flower beds and under shrubbery. Use the same dosage recommended (1 pounds per 1,000 sq. ft.) for control of these pests on turf found in the application chart.

To control: Fire Ants - Professional Use Only Treat individual fire ant mounds as instructed above by adding 1 oz. (2 Tablespoons) of Dursban 2.5% gently and evenly to the surface and surrounding two feet of active fire ant mounds during early morning or late evening: when ants are least active.

Note: 1 oz = 6 teaspoons = 2 tablespoons = 1/8 cup

Imported Fire Ant Control in Ornamental Nurseries for Professional Use in Commercial Production Only:

In Nursery Beds and Potting Media: Thoroughly mix 1 pound of Dursban 2.5% per cubic yard of media. Use equipment suitable to give uniform distribution of granules.

In Container and Field Grown Woody Ornamentals (B&B Stock): Apply Dursban 2.5% broadcast at 250 lbs. per Acre (6 lb. A.I. per acre) as a preharvest treatment to ornamental (non-food bearing) plants.

For certification under the USDA Imported Fire Ant (IFA) Quarantine, use this product 3-5 days after an approved broadcast bait application. Apply Dursban 2.5% broadcast at 250 lbs. per Acre (6 lb. A.I. per acre). Treatment area must extend at least 10 feet beyond the base of all plants that are to be certified. Exposure period is 30 days and plants are certifiable for 30 days after the treatment sequence is completed. Certification period is 12 weeks.

Check the current USDA IFA quarantine guidelines before treatment for certification.

Limitation of Remedies

The exclusive remedy for losses or damages resulting from this product (including claims based on contract, negligence, strict liability, or other legal theories), shall be limited to, at Seller's election, on of the following: (1.) Refund of purchase price paid by buyer or user for product bought, or (2.) Replacement of amount of product used. Manufacturer or Seller shall not be liable for losses or damages resulting from handling or use of this product unless Seller is promptly notified of such loss or damage in writing. In no case shall Manufacturer or Seller be liable for consequential or incidental damages or losses. The terms of the "Warranty Disclaimer" above and the "Limitation of Remedies" cannot be varied by any written or verbal statements or agreements. No employee or sales agent of the Manufacturer or Seller or the seller is authorized to vary or exceed the terms of the "Warranty Disclaimer" or "Limitation of Remedies" in any manner.

