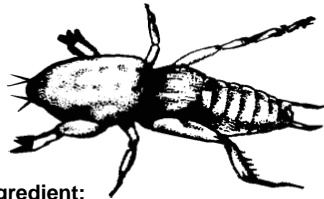


# DURSBAN\* 1% MOLE CRICKET BAIT

For Control of Mole Crickets and various other listed Insects  
Infesting Turf on Golf Courses, Sod Farms, Road Medians and  
Commercial Ornamental Nurseries



**Active Ingredient:**

Chlorpyrifos: O,O-diethyl-O-(3,5,6-trichloro-2-pyridinyl)phosphorothioate .....	1.0%
Inert Ingredients .....	99.0%
Total .....	100.0%

\*Trademark of Dow AgroSciences

Keep Out of Reach of Children

## CAUTION

### PRECAUTIONARY STATEMENTS

#### HAZARDS TO HUMANS AND DOMESTIC ANIMALS

**CAUTION:** May be harmful if swallowed. Do not take internally. Avoid eye and skin contact. Keep away from food, feedstuffs, and domestic water supplies.

#### PERSONAL PROTECTIVE EQUIPMENT (PPE)

Applicators and other handlers must wear long-sleeved shirt and long pants and shoes plus socks. Follow manufacturer's instructions for cleaning/maintaining PPE. If no such instructions for washables, use detergent and hot water. Keep and wash PPE separately from other laundry.

### USER SAFETY RECOMMENDATIONS

Users should: wash hands before eating, drinking, chewing gum, using tobacco or using the toilet. Remove clothing immediately if pesticide gets inside. Then wash thoroughly and put on clean clothing.

### ENVIRONMENTAL HAZARDS

This product is toxic to fish, pets, birds, and other wildlife. For terrestrial uses, do not apply directly to water, or to areas where surface water is present, or to intertidal areas below the mean high water mark. Do not contaminate water when disposing of equipment washwaters. Apply only as specified on this label.

### FIRST AID ORGANOPHOSPHATE

**IF INHALED:** Move person to fresh air. If person is not breathing, call 911 or an ambulance, then give artificial respiration, preferably by mouth, if possible. Call a poison control center or doctor for further treatment advice.

**IF ON SKIN or CLOTHING:** Take off contaminated clothing. Rinse skin immediately with plenty of water for 15-20 minutes. Call a poison control center or doctor for treatment advice.

**IF IN EYES:** Hold eye open and rinse slowly and gently with water for 15-20 minutes. Remove contact lenses, if present, after the first 5 minutes, then continue rinsing eye. Call a poison control center or doctor for treatment advice.

**IF SWALLOWED:** Call a poison control center or doctor immediately for treatment advice. Have person sip a glass of water if able to swallow. Do not induce vomiting unless told to do so by the poison control center or doctor. Do not give anything by mouth to an unconscious person.

**NOTE TO PHYSICIAN:** Chlorpyrifos is a cholinesterase inhibitor. Treat symptomatically. Atropine, only by injection, is the preferable antidote.

Have the product container or label with you when calling a poison control center or doctor, or going for treatment.

For information on this pesticide product (including health concerns, medical emergencies, or pesticide incidents), call the National Pesticide Telecommunications Network at 1-800-858-7378

### STORAGE AND DISPOSAL

Do not contaminate water, food or feed by storage or disposal. **Storage:** Store in original container in a locked storage area out of the reach of children and pets. Do not store above 100°F for extended periods of time. If container is damaged or spill occurs, use product immediately or dispose of product and damaged container as indicated below. **Pesticide Disposal:** Wastes resulting from the use of this product may be disposed of according to use directions or at an approved waste disposal facility. **Container Disposal:** Completely empty bag into application equipment. Then dispose of bag in a sanitary landfill or by incineration.

**Southern Agricultural Insecticides, Inc.**

Palmetto, Fla. 34220      Hendersonville, N.C. 28793      Boone, N.C. 28607

E.P.A. Reg. No. 829-291      J2      EPA Est. No. 829-FL-1

**Net Weight: 40 lbs. (18.14 kg)**

# DIRECTIONS FOR USE

It is a violation of Federal Law to use this product in a manner inconsistent with its labeling. Do not apply this product in a way that will contact workers or other persons, either directly or through drift. Only protected handlers may be in the area during application. For any requirements specific to your State or Tribe, consult the agency responsible for pesticide regulation.

## AGRICULTURAL USE REQUIREMENTS

Use this product only in accordance with its labeling and with the Worker Protection Standard, 40 CFR part 170. This Standard contains requirements for the protection of agricultural workers on farms, forests, nurseries, and greenhouses, and handlers of agricultural pesticides. It contains requirements for training, decontamination, notification, and emergency assistance. It also contains specific instructions and exceptions pertaining to the statements on this label about personal protective equipment (PPE), and restricted-entry interval. The requirements in this box only apply to uses of this product that are covered by the Worker Protection Standard. Do not enter or allow worker entry into treated areas during the restricted entry interval (REI) of 24 hours. PPE required for early entry to treated areas that is permitted under the Worker Protection Standard and that involves contact with anything that has been treated, such as plants, soil, or water, is: coveralls, waterproof gloves, and shoes plus socks.

## NON-AGRICULTURAL USE REQUIREMENTS

The requirements in this box apply to uses of this product that are NOT within the scope of the Worker Protection Standard for agricultural pesticides (40 CFR Part 170). The WPS applies when this product is used to produce agricultural plants on farms, forests, nurseries, or greenhouses. Keep the public (including children and pets) off treated area until subsequent rainfall or irrigation has washed the bait into the soil and the area is dried.

## GENERAL INFORMATION

SA-50 Dursban<sup>®</sup> 1% Mole Cricket Bait is intended for control of Mole Crickets and various other insects (which may feed on this insecticidal bait) infesting turf on golf courses, sod farms, road medians and ornamental nurseries. Do not use this product indoors.

### Insects Controlled Include:

Ants, Armyworms, Billbugs, Crickets, Cutworms, Earwigs, Grasshoppers, Mole Crickets, and Sowbugs (pillbugs)

Dosage Rates	
Area To Be Treated	Pounds of Dursban 1% Mole Cricket Bait
1,000 sq ft	2.5 pounds
5,000 sq ft	12.5 pounds
10,000 sq ft	25 pounds
1 Acre	100 pounds

## APPROVED USES

### Applications to Turf on Golf Courses, Sod Farms and Road Medians

Apply SA-50 Dursban<sup>®</sup> 1% Mole Cricket Bait uniformly to turf on golf courses, sod farms and road medians at the rate of 2.5 pounds per 1,000 sq ft. Consult the table to determine the amount of SA-50 Dursban<sup>®</sup> 1% Mole Cricket Bait needed for a larger-sized areas. Use any hand or power-operated gravity or rotary type spreader designed for application of granular materials. To help obtain uniform distribution of SA-50 Dursban<sup>®</sup> 1% Mole Cricket Bait on turf, apply one-half of the required amount of product in one direction; then apply the amount remaining at a right angle.

### Applications in and around Commercial Ornamental Nurseries

Apply SA-50 Dursban<sup>®</sup> 1% Mole Cricket Bait evenly over soil within and around Ornamentals being grown for commercial production in nurseries. Use the same dosage and equipment as recommended (2.5 pounds per 1,000 sq. ft.) for control of listed pests. Consult the table to determine the amount of SA-50 Dursban<sup>®</sup> 1% Mole Cricket Bait needed.

## Warranty Disclaimer

Southern Ag and Seller warrants that this product conforms to the chemical description on the label and is reasonably fit for the purposes stated on the label when used in strict accordance with the directions, subject to the inherent risks set forth below. SOUTHERN AG AND SELLER MAKES NO OTHER EXPRESS OR IMPLIED WARRANTY OF MERCHANTABILITY OR FITNESS FOR A PARTICULAR PURPOSE OR ANY OTHER EXPRESS OR IMPLIED WARRANTY.

## Inherent Risks of Use

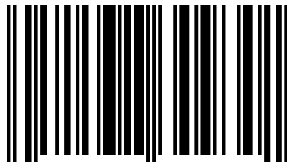
It is impossible to eliminate all risks associated with use of this product. Plant injury, lack of performance, or other unintended consequences may result because of such factors as use of the product contrary to label instructions (including conditions noted on the label, such as unfavorable temperature, soil conditions, etc.), abnormal conditions (such as excessive rainfall, drought, tornadoes, hurricanes), presence of other materials, the manner of application, or other factors, all of which are beyond the control of Southern Ag and Seller. All such risks shall be assumed by Buyer.

## Limitation of Remedies

The exclusive remedy for losses or damages resulting from this product (including claims based on contract, negligence, strict liability, or other legal theories), shall be limited to, at Seller's election, on of the following:

1. Refund of purchase price paid by buyer or user for product bought,
- or 2. Replacement of amount of product used.

Manufacturer or Seller shall not be liable for losses or damages resulting from handling or use of this product unless Seller is promptly notified of such loss or damage in writing. In no case shall Manufacturer or Seller be liable for consequential or incidental damages or losses. The terms of the "Warranty Disclaimer" above and the "Limitation of Remedies" cannot be varied by any written or verbal statements or agreements. No employee or sales agent of the Manufacturer or the seller is authorized to vary or exceed the terms of the "Warranty Disclaimer" or "Limitation of Remedies" in any manner.



0 51538 30930 1