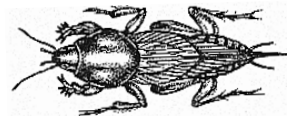
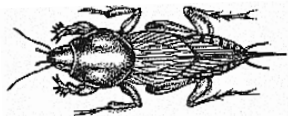




MOLE CRICKET BAIT



FOR THE CONTROL OF MOLE CRICKETS, CUTWORMS, ARMYWORMS, FIELD CRICKETS, DARKLING BEETLES, GRASSHOPPERS AND SOWBUGS IN LAWNS, ORNAMENTALS, VEGETABLES AND OTHER LISTED CROPS.
CONTAINS CARBARYL INSECTICIDE

ACTIVE INGREDIENT:	
Carbaryl: 1-Naphthyl N-methylcarbamate)	5.0%
INERT INGREDIENTS:.....	95.0%
TOTAL	100.0%

**KEEP OUT OF REACH OF CHILDREN
AND DOMESTIC ANIMALS
CAUTION**

FIRST AID

IF SWALLOWED: Call a physician or Poison Control Center or doctor immediately for treatment advice. Have person sip a glass of water if able to swallow. Do not induce vomiting unless told to by a poison control center or doctor. Do not give anything by mouth to an unconscious person.

IF ON SKIN or CLOTHING: Take off contaminated clothing. Rinse skin immediately with plenty of water for 15-20 minutes. Call a poison control center or doctor for treatment advice.

IF IN EYES: Hold eye open and rinse slowly and gently with water for 15-20 minutes. Remove contact lenses, if present, after the first 5 minutes, then continue rinsing eye. Call a poison control center or doctor for treatment advice.

Have the product container or label with you when calling a poison control center or doctor, or going for treatment advice. You may also contact 1-800-858-7378 for emergency medical treatment information.

NOTE TO PHYSICIAN: Carbaryl is an N-methyl carbamate which is a cholinesterase inhibitor. Specific antidote consists of atropine. Narcotics and other sedatives should not be used. Drugs like 2-PAM (pyridine-2-aldoxime methiodide) are NOT recommended.

FOR INFORMATION AND QUESTIONS CONCERNING THIS PRODUCT PLEASE CONTACT US BY EMAIL AT SUPPORT@SOUTHERNAG.COM.

EPA EST. NO. 829-FL-1 (3), 829-NC-1 (4); 829-NC-2 (5) NUMBER FOLLOWING EST. NO. CORRESPONDS TO FIRST DIGIT IN LOT NO.

PRECAUTIONARY STATEMENTS

HAZARD TO HUMANS and DOMESTIC ANIMALS
Caution: Harmful if swallowed. Harmful is absorbed through skin. Causes moderate eye irritation. Avoid contact with eyes, skin, or clothing.

USER SAFETY RECOMMENDATIONS
Users should wash hands thoroughly with soap and water before eating, drinking, chewing gum, using tobacco or using the toilet.
Users should remove PPE immediately after handling this product. Wash the outside of gloves before removing. As soon as possible, wash thoroughly and change into clean clothing.

ENVIRONMENTAL HAZARDS

This product is extremely toxic to aquatic invertebrates. To protect the environment, do not allow pesticide to enter or run off into storm drains, drainage ditches, gutters or surface waters. Sweeping any product that lands on a driveway, sidewalk, or street, back onto the treated area of the lawn or garden will help to prevent run off to water bodies or drainage systems.

STORAGE AND DISPOSAL

Nonrefillable container. Do not reuse or refill this container. Do not contaminate water, food, or feed by storage or disposal.
PESTICIDE STORAGE: Pesticide should be stored in the original container in a locked storage area.
PESTICIDE DISPOSAL: If partly filled: Call your local solid waste agency or 1-800-CLEANUP for disposal instructions. Never place unused product down any indoor or outdoor drain.
CONTAINER DISPOSAL: If empty: Do not reuse this container. Place in trash or offer for recycling if available.

Southern Agricultural Insecticides, Inc.
Palmetto, FL 34220 Hendersonville, NC 28793 Boone, NC 28607
EPA Reg. No. 829-285 J3 Net Weight: 3.6 LBS. (1.63 kg.)

DIRECTIONS FOR USE

RESTRICTIONS

It is a violation of Federal Law to use this product in a manner Inconsistent with its labeling. Do not apply this product in a way that will contact workers or other persons, either directly or through drift.

This product may be applied only using a push spreader. This product may not be applied by hand, spoon, or belly grinder. Product must be watered in immediately following application to lawns. For outdoor use only. Not for use on plants being grown for sale or other commercial use, or for commercial seed production, or for research purposes."

Do not allow people or pets to enter or allow others allow people or pets to enter the treated area until dusts have settled. Watering-in is required after application to lawns. Do not enter or allow others to enter treated lawns (except those persons involved in the application and watering) until the watering in is complete and until the surface is dry after the watering-in.

TO CONTROL MOLE CRICKETS IN RESIDENTIAL LAWNS, ORNAMENTALS and VEGETABLES

LAWNS, Cover area evenly at a rate of .75 to .9 lb. per 1000 sq. ft. One pound container will treat 1,300 to 1,100 sq. ft. Do not make more than 4 applications per year. Do not retreat before 7 days. For best results cut grass, remove clippings and water thoroughly before treatment. Product must be watered in immediately following application.

ORNAMENTAL PLANTINGS - Cover soil evenly and uniformly around flowers, shrubs and trees at the rate of .75 to .9 lb./1000 sq. ft. One pound will treat 1,300 to 1,100 sq. ft. Do not make more than 3 applications per year. Do not retreat before 7 days. For best results, areas to be treated should be damp. Product must be watered in immediately following application.

VEGETABLE AND OTHER CROPS - Cover area evenly. Treatments may be repeated as listed below. Dosages from .45 lb. to .9 lb. per 1,000 sq. ft. will control Ants (excluding pharaoh ants fire ants, harvester ants and carpenter ants), Cutworms, Armyworms, Crickets, Darkling Beetles, Grasshoppers and Sowbugs. move clippings and water thoroughly before treatment.

VEGETABLE AND OTHER CROPS	Rate Per 1,000 Sq. Ft.	Maximum Applications per year
Cucumbers (3), Squash (3), Melons (3),*7	.45 lb.	6
Eggplant (3), Peppers (3), Tomatoes (3) *7	.9 lb.	4
Broccoli (3), Brussels Sprouts (3), Cabbage (3), Cauliflower (3),*7 Application is permitted only within 30 days from the date of crop emergence or the date of transplanting.	.9 lb.	3
Garden Beets (roots) (7), Potatoes (7), Radishes and Turnips (roots) (7) Carrots (7), *2,	.9 lb.	3

Number in () behind crop name is the days required between final application and harvest (PHI)

* behind crop name is Minimum Retreatment Interval, days

NOTICE: To the extent consistent with applicable law, buyer assumes all risk and liability of use, storage and/or handling of this material not in accordance with the terms of this label.

FOR INFORMATION AND QUESTIONS CONCERNING THIS PRODUCT PLEASE CONTACT US BY



EPA Reg. No. 829-285 J3 3.6 lb.

0 51538 08353 9