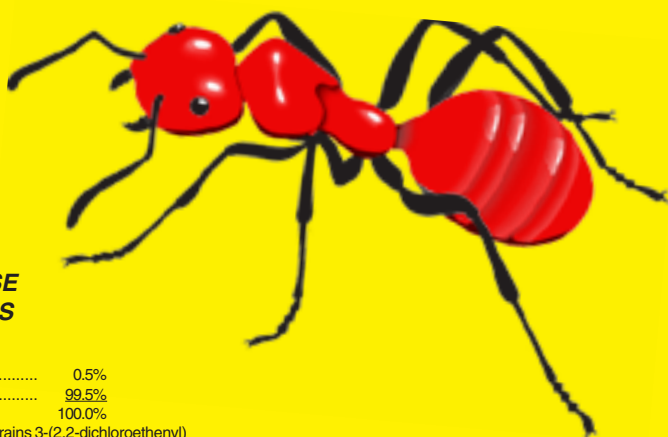


S A SOUTHERN**5 0 AG®**

FIRE ANT CONTROL GRANULES



- * **READY TO USE**
- * **FOR OUTDOOR USE**
ON HOME LAWNS

ACTIVE INGREDIENT:

*Permethrin 0.5%

INERT INGREDIENTS: 99.5%

100.0%

*(3-phenoxyphenyl) methyl (+/-) is/trans 3-(2,2-dichloroethyl) 2,2-dimethyl-cyclopropanecarboxylate.

Cis/trans ratio: Min. 35% (+/-) cis and max. 65% (+/-) trans.

KEEP OUT OF REACH OF CHILDREN

CAUTION

First Aid**IF IN EYES:** Hold eye open and rinse slowly and gently with water for 15-20 minutes.

Remove contact lenses, if present, after the first 5 minutes, then continue rinsing eye.

Call a poison control center or doctor for treatment advice.

Have the product container or label with you when calling a poison control center or doctor, or going for treatment.

For information on this pesticide product (including health concerns, medical emergencies, or pesticide incidents), call the National Pesticide Information Center at 1-800-858-7878.

For questions pertaining this product, please email us at support@southernag.com

EPA EST. NO. 829-FL-1

PRECAUTIONARY STATEMENTS**Hazards to Humans and Domestic Animals****CAUTION:** Causes moderate eye irritation. Avoid contact with eyes or clothing. Wash thoroughly with soap and water after handling and before eating, drinking, chewing gum or tobacco.**Environmental Hazards**

This product is extremely toxic to fish. Do not apply directly to water. Drifts and Runoffs from treated areas may be hazardous to aquatic organisms in treated areas. Do not contaminate water when disposing of equipment washwaters.

STORAGE & DISPOSALDo not contaminate water, food, or feed by storage or disposal. **PESTICIDE STORAGE:** Store pesticide in the original container in a locked storage area.**DISPOSAL:** If empty: Do not reuse this container. Place in trash or offer for recycling if available. If partly filled: Call your local solid waste agency or 1-800-CLEANUP for disposal instructions. Never place unused product down any indoor or outdoor drain.**Southern Agricultural Insecticides, Inc.**

Palmetto, Fla. 34220 Hendersonville, N.C. 28793 Boone, N.C. 28607

E.P.A. Reg. No. 829-296 J1 **Net Weight: 3 lbs. (6.61kg)**

DIRECTIONS FOR USE

It is a violation of Federal law to use this product in a manner inconsistent with its labeling.

READ ENTIRE LABEL. USE STRICTLY IN ACCORDANCE WITH LABEL PRECAUTIONARY STATEMENTS AND DIRECTIONS.

Fire Ant Control Granules is recommended for the control of lawn insects, fleas and ticks outdoors in residential areas. Repeated applications are made by broadcast treatment with a spreader to lawns, under shrubbery, and other ornamental and turf grass areas, band treatments are recommended around house foundations and spot applications are made to ant mounds and wasp nests.

Food utensils such as teaspoons or measuring cups should not be used for food purposes after use with pesticides.

Not for sale on plants being grown for sale or other commercial use or for commercial seed production or for research purposes.

GENERAL USE DIRECTIONS

1. Determine size of area to be treated - measure and multiply length times width.
2. Determine appropriate spreader setting using chart.
3. Treated as directed - thorough coverage is important. Water in where indicated.
4. Keep children and pets off treated areas until this material is washed into turf and grass is dry.

OVERALL LAWN TREATMENT

FOR GRASS AND DICHONDRA LAWNS

To control *Ants*, *Army worms (including Fall, Yellow-Striped, etc.)*, *Bermudagrass mites*, *Billbugs (adult)*, *Boxelder Bugs*, *Centipedes*, *Chiggers*, *Chinch Bugs*, *Clover mites*, *Cockroaches*, *Crickets*, *Cutworms*, *Darkling Ground Beetles*, *Digger wasps*, *Essex Skipper*, *Field Crickets*, *Fiery Skipper*, *Flea Beetle (in dichondra)*, *Grasshopper*, *Hyperodes (Turfgrass Weevil)*, *Japanese Beetle (adult)*, *Lawn Moths*, *Leafhoppers*, *Scorpions*, *Silverfish & Firebrats*, *Sod Webworms*, *Sowbugs*, *Spiders (including Black Widow)*, *Spittlebugs*, *Springtails*, *Vegetable Weevils (in Dichondra)*;

Apply this product uniformly to home lawns, under shrubbery, and other ornamental recreational turf grass areas. Treat when insects first appear using granules at the rate of 2 pounds per 1,000 sq. ft. or, for heavy lawns such as St. Augustine grass, 3 pounds per 1,000 sq. ft. using a fertilizer spreader. See spreader setting chart below. To help obtain uniform distribution, apply one-half required amount of product in one direction, then apply the balance at a right angle. Immediately after application, water the lawn lightly.

Chinch Bugs - Start treatments when temperatures reach 80°F or above. A second application may be necessary in 6 weeks if insect activity continues.

BAND (PERIMETER) TREATMENT AROUND HOUSE FOUNDATION

To help prevent infestation of buildings by *Ants*, *Boxelder Bugs*, *Brown Dog Ticks*, *Centipedes*, *Cockroaches*, *Clover Mites*, *Crickets*, *Field Crickets*, *Fleas*, *Scorpions*, *Sowbugs*, *Spiders (including Black Widow)*, *Springtails (Collembola)* and *Ticks*; treat at a rate of one pound per 500 sq. ft. or 2 lbs. per 1,000 sq. ft. Apply a 5-foot band of granules next to the house foundation. Distribute granules uniformly. Water lightly after application.

SPOT TREATMENT

ANTS NESTING OUTDOORS: This product may be used outdoors for the control of ants, including: **Acrobat**, **Argentine**, **Big Headed**, **Cornfield**, **Field**, **Harvester**, **Leafcutter**, **Little Black**, **Pavement** and **Pyramid Ants**. If possible, it is best to try to locate nest and treat this first. Nests will usually be found in the ground but may be concealed under stones, boards, slabs or in stumps or logs. Product should be applied to thoroughly cover the nest (1 to 2 teaspoons) and sprinkled gently with water. In addition to treating ant nests or mounds, entry points of buildings (used by ants) and the soil surface along the perimeter of the building should be treated.

DIGGER WASPS: Apply 1 to 2 teaspoons of granules in and around each individual ground nest opening. Make the application at dusk when the wasps are not active.

IMPORTED FIRE ANTS:

Apply one cup over, and 2 feet around each fire ant mound. Immediately after application, water the granules into the soil gently with a light sprinkling to avoid disturbing the colony. Use at least 1 gallon of water per mound, but no more than 2 gallons. Use of high pressure watering equipment may disturb the colony and cause migration of the ants, thus reducing the effectiveness of the treatment. Apply in cool weather (65 - 80°F), or in early morning or late evening for best results. Treat new mounds as they appear.

SPREADER SETTINGS

Setting to Deliver:

| Spreader Make and Model | 2lbs/1000 ft | 3 lbs/1000ft |
|---------------------------|--------------|--------------|
| Cyclone Broadcast | 3 | 5 |
| Greenview Jet Spred III | 4 | 6 |
| Greenview Drop Spred III | 3 | 5 |
| Republic Drop EZ 530 | 6 1/2 | 8 |
| Scotts AG3 | 6 | 7 |
| Scotts SG3 | 4 | 5 |
| Scotts EG3 | 24 | 26 |
| Scotts PF4 | 6 | 7 |
| Sears Craftsman Broadcast | 5 1/2 | 7 |
| Sears Craftsman Drop | 5 1/2 | 7 |

Note: Spreader settings given are approximate and variation can occur between identical models. User should calibrate spreader by accurately weighing a few pounds into your spreader and applying to a measured area. Then adjust spreader setting if necessary to assure correct rate of application.

IMPORTANT: READ BEFORE USE

By using this product, user or buyer accepts the following conditions, warranty, disclaimer of warranties and limitations of liability.

CONDITIONS: The directions for use of this product are believed to be adequate and should be followed carefully. However, because of manner of use and other factors beyond the manufacturer's control, it is impossible for the manufacturer to eliminate all risks associated with the use of this product. All such risks shall be assumed by the user or buyer.

DISCLAIMER OF WARRANTIES: THERE ARE NO WARRANTIES, EXPRESS OR IMPLIED, OF MERCHANTABILITY OR OF FITNESS FOR A PARTICULAR PURPOSE OR OTHERWISE, WHICH EXTEND BEYOND THE STATEMENTS MADE ON THIS LABEL. No agent of Southern Agricultural Ins., Inc. is authorized to make any warranties beyond those contained herein or to modify the warranties contained herein. Southern Agricultural Ins., Inc. disclaims any liability whatsoever for incidental or consequential damages, including, but not limited to, liability arising out of breach of contract, express or implied warranty (including warranties of merchantability and fitness for a particular purpose), tort, negligence, strict liability or otherwise.

LIMITATIONS OF LIABILITY: THE EXCLUSIVE REMEDY OF THE USER OR BUYER FOR ANY AND ALL LOSSES, INJURIES OR DAMAGES RESULTING FROM THE USE OR HANDLING OF THIS PRODUCT, WHETHER IN CONTRACT, WARRANTY, TORT, NEGLIGENCE, STRICT LIABILITY OR OTHERWISE, SHALL NOT EXCEED THE PURCHASE PRICE PAID FOR, OR AT AVENTIS ENVIRONMENTAL SCIENCE'S ELECTION, THE REPLACEMENT OF PRODUCT.

